



AJMERA ELECTROTECH LLP

Right Name For Right Use

Company Profile

For more than 45 years now, we, AJMERA, are based in Mumbai, India. We take this opportunity to introduce ourselves as one of the leading Electrical Switchgears and Light Fittings manufacturers. We have served our customers, which include Government and Semi-Government bodies as well as leading private companies. We are accredited with ISO 9001:2015 Certification and are covered under MSME and NSIC India.

State Award: It is heartening to note that THE GOVERNMENT OF MAHARASHTRA has bestowed the prestigious award for performance in the year 2009 upon our company, and it is a significant moment in the company's history. Every step taken since then is to maintain and enhance our performance even further.

We have necessary testing facilities at our factories that are updated frequently to match changing technologies and customer requirements. Professional staff and skilled workers help in carrying out required tests to ensure quality and efficiency.

Last but not least, you can rest assured that we shall not compromise on the quality of our products at all. Providing quality products and services to our customers is our prime motto, and we strictly adhere to the delivery schedules of our valued clients.



Management

Our management ensures to streamline production without compromising efficiency to strengthen the process and guarantee that each step in the production chain can meet the required quality standards. The company believes in quality consciousness, which implies awareness of oneself and the environment, including quality and high performance for People, Processes, and Products. Product quality is a significant part of this company's identity, and since the very beginning, quality and efficiency have paved the road to the international recognition of our company. We at Ajmera are proud that we have managed to build a reputable name in the industry with the combination of a corporate culture, state-of-the-art equipment, and a focused and quality-conscious workforce.



Quality Policy

Although our units are registered under Small Scale Industries, we have managed to be one of the top manufacturers of electrical switch gears and light fittings through the know-how developed for almost four decades of extensive efforts. Our ultimate aim is to go beyond simply satisfying customers, by ever-improving products and services. We strive for excellence in the quality and reliability of our products and services.

Purchasing: We have qualified vendors on our list. Every purchase is monitored closely for quality purposes. Any product with the slightest deviation from our standards is rejected immediately.

Inspection: We never compromise on the condition of materials and components. The individual in charge of purchasing scrutinizes, inspects, and tests on a 100% basis. Our in-house testing laboratories are equipped with high-performance equipment for all the required testing and inspection. We also encourage customers to be present at the time of testing. If the customer needs further tests/certification, provisions are made, and details are included in the contract. Non-conformities on inspection and testing are brought to the attention of the Quality-in-Charge personnel instantly, who is authorized to take appropriate actions.

Corrective action: If a lot is rejected, the supplier takes up the matter for disciplinary action. If an accepted item is found to be faulty, then the case is taken up with the supplier or our internal department to initiate corrective action by the Quality-in-Charge personnel or the person assigned by them to do so.

Handling, Storage, Packing & Delivery: All materials are handled carefully and stored separately. The units are wrapped in plastic, then packed in multiple corrugated boxes or wooden cases, and then appropriately labeled, indicating model & serial number. The end product gets delivered as per contract terms.

Quality Records: All Test/Inspection reports can be issued to clients who ask for the same.



Certificates



Our LED products are well complied with the following factors.

POWER
FACTOR

ENERGY SAVING



LONG
LIFE



**USER
FRIENDLY**



NO UV /
MERCURY



ECO
FRIENDLY

Double - Deck Navigation Signal Light

The scope of application

Suited for ships with a minimum length of 50m or more, the lamp signal works as a liaison when navigating through the night.

Product characteristics

- The shell is made of high-strength engineered plastic PA+GF injection, the lampshade is made of Polycarbonate injection, and the lens hood is premium quality stainless steel.
- The signal lights are structured to be completely sealed. Hence they are waterproof and generally resistant to bad weather.
- The connection type between the lamp holder and the light base is a clamshell; this makes it easy to unscrew the top cover and replace the bulb. This structure is more stable than the obsolete plug-in type.
- The signal light's bulb conforms to the ship's norms, and the average life is more than 700h.

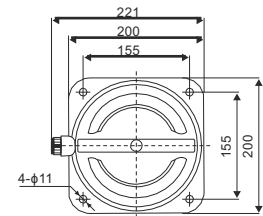
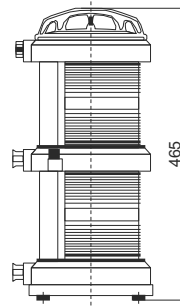
The following norms and standards regulate our production process and the final products:

- The International Regulations for Preventing Collision at Sea, 1972
- Grade Entry Norms for Steel Ships
- International standard IEC60598-1-2008
- Standard of marine electric signal light's technical condition GB/T 3028-1995

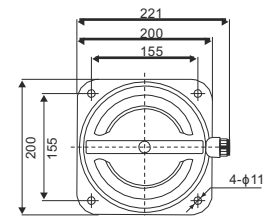
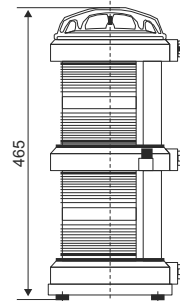
Specifications

Name	Type	Visibility	Level arc	WATT & Voltage	Protection Class	Colour
Double - Deck Starboard Light	8101C NL	2n.m	112.5°	24V/2 x 8W 240V x 65W	Ip56	Green
Double - Deck Port Light	8102C NL	2n.m	112.5°			Red
Double - Deck Masthead Light	8103C NL	5n.m	225°			Transparent
Double - Deck Stern Light	8104C NL	2n.m	135°			Transparent Yellow
Double - Deck All-Round Light	8105C NL	2n.m	360°			Red Green Transparent

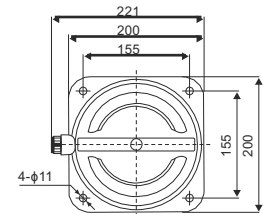
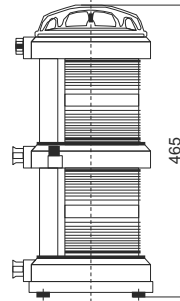
8101C NL
Double - Deck Starboard Light



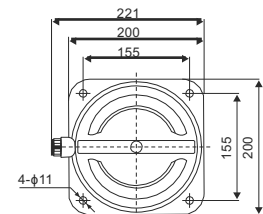
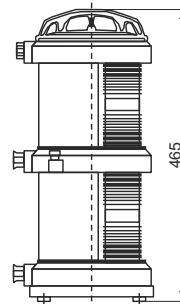
8102C NL
Double - Deck Port Light



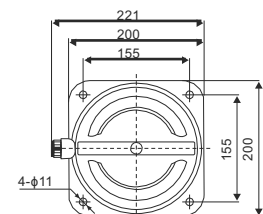
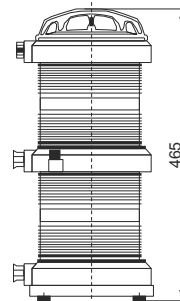
8103C NL
Double - Deck Masthead Light



8104C NL
Double - Deck Stern Light



8105C NL
Double - Deck All-Round Light



Single - Deck Navigation Signal Light

The scope of application

Suited for ships with a minimum length of 50m or more, the lamp signal works as a liaison when navigating through the night.

Product characteristics

- The shell is made of high-strength engineered plastic PA+GF injection, the lampshade is made of Polycarbonate injection, and the lens hood is premium quality stainless steel.
- The signal lights are structured to be completely sealed. Hence they are waterproof and generally resistant to bad weather.
- The connection type between the lamp holder and the light base is a clamshell; this makes it easy to unscrew the top cover and replace the bulb. This structure is more stable than the obsolete plug-in type.
- The signal light's bulb conforms to the ship's norms, and the average life is more than 700h.

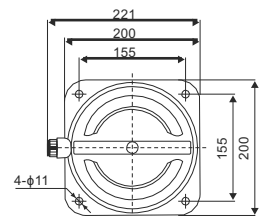
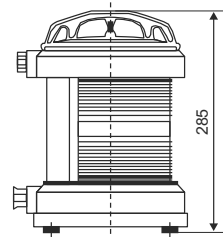
The following norms and standards regulate our production process and the final products:

- The International Regulations for Preventing Collision at Sea, 1972
- Grade Entry Norms for Steel Ships
- International standard IEC60598-1-2008
- Standard of marine electric signal light's technical condition GB/T 3028-1995

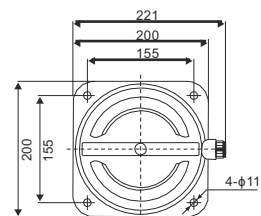
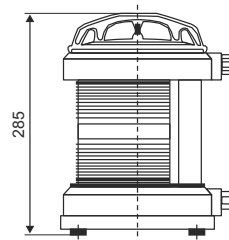
Specifications

Name	Type	Visibility	Level arc	WATT & Voltage	Protection Class	Colour
Single - Deck Starboard Light	811C NL	2n.m	112.5°	24V x 8W 220V x 65W	Ip56	Green
Single - Deck Port Light	812C NL	2n.m	112.5°			Red
Single - Deck Masthead Light	813C NL	5n.m	225°			Transparent
Single - Deck Stern Light	814C NL	2n.m	135°			Transparent Yellow
Single - Deck All-Round Light	815C NL	2n.m	360°			Red Green Transparent

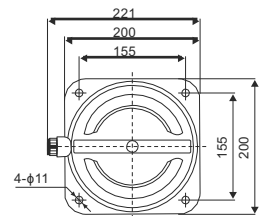
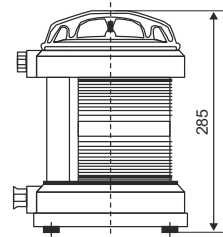
811C NL
Starboard Light



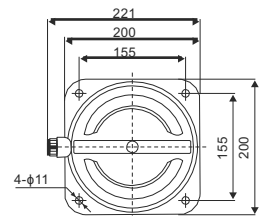
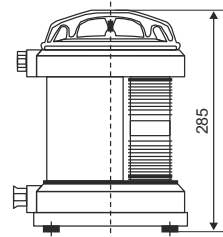
812C NL
Port Light



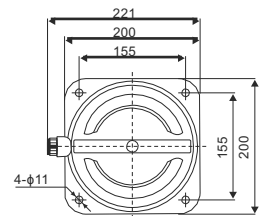
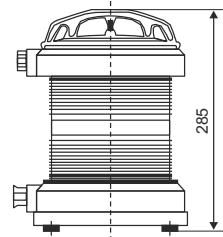
813C NL
Masthead Light



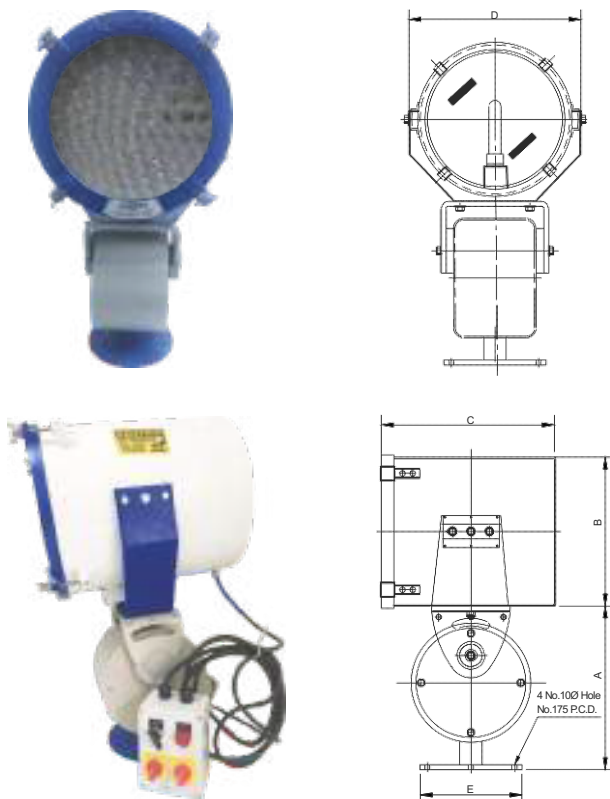
814C NL
Stern Light



815C NL
All-Round Light



Remote Operated Search Lights



Specifications

Type	1103 LE	1203 LE
Sourcing lamp	LED	LED
Lamp Watt	200 W	300 W
Lamp Voltage	240 V / 110 V / 24 V	240 V / 110 V / 24 V
Search Light Enclosure	Aluminum Sheet	Aluminum Sheet
Relector	Lenses	Lenses
Range (Approx)	600 - 800 Mts	800 - 1200 Mts
Control Box Enclosure	Die Cast Aluminum	Die Cast Aluminum
Remote Enclosure	ABS	ABS
Forward / Reverse Movement	Yes	Yes
Vertical Movement	Yes	Yes
Indicator Power	Yes	Yes
Wire from Remote to Search Light	Based on user Requirements	Based on user Requirements
Connector type	Junction Box	Junction Box
Housing Material	Aluminium	Aluminium
Weight (App)	26 Kgs	28 Kgs

Dimensions of Remote Operated Search Lights

A	B	C	D	E
330	330	350	350	205
330	380	350	400	205

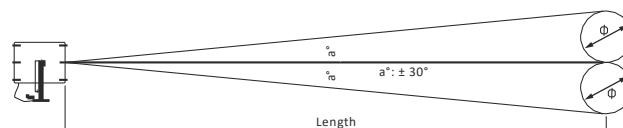
Manual Search Lights



Projector Signaling Light

Specifications

Type	1571 LE	1573 LE
Sourcing Lamp	LED	LED
Lamp Watt	200W	300W
Lamp Voltage	240 V / 110 V / 24 V	240 V / 110 V / 24 V
Housing Material	Aluminium	Aluminium
Reflector	Lenses	Lenses
Colour	Black or White	Black or White
Range (Approx)	600 to 800 mtrs	600 to 800 mtrs
Craddle	MS	MS
Clamp	MS	MS
Under Platform arrangement	MS	MS
Hinged Front Ring	Aluminium	Aluminium
Round Disc	MS	MS
Vertical Movement	Manual	Manual
Weight (Approx)	18 kg	23 kg



Marine Watertight Deck/well Glass/pendent Led Light Fitting



- 1112/AL Die cast Aluminium body with die cast protective wire guard with U-shape polycarbonate milky shade with rubber gasket, 2 way connector with 2 cable entries and PG cable glands. Stainless Steel hardware. Fitting for 12W. 240V. LED with Suitable Electronic LED Driver. Fitting in the line of IP 65 protection.
- 1112/BR Same as per above... But with cast Brass body and Brass / SS wire guard.
- 1212/AL Same as per 1112 - suitable for side wall mounting arrangement with 2 cable entries and PG glands on opposite sides.
- 1212/BR ... Do... But cast Brass body with Brass / SS wire guard.
- 1315/AL Similar to 1112 / AL but suitable for 15W. 240V. LED.
- 1315/BR Similar to 1315 / AL but in brass body.
- 1107/AL Same as per 1112. Fitting for 6W. 24V. LED
- 1107/BR Same as per 1112. Fitting for 6W. 24V. LED in brass body.

Product Specifications

All fittings can be available 110W / 24V if required

Catalog No.	Watt	Annual Power Consumption	Min. Lumens
1112 / AL	12 W	36 KW	1200 lm
1112 / BR	12 W	36 KW	1200 lm
1212 / AL	12 W	36 KW	1200 lm
1212 / BR	12 W	36 KW	1200 lm
1315 / AL	15 W	45 KW	1500 lm
1315 / BR	15 W	45 KW	1500 lm
1107 / AL	6 W	18 KW	600 lm
1107 / BR	6 W	18 KW	600 lm

Marine Watertight Led Bulkhead Fitting

- 1115/AL Die cast Aluminium body with Die cast Aluminium cover fix up with 4 screws. Oblong shape milky polycarbonate shade with rubber gasket and protective S.S. wire guard. 2 way connector, 2 cable entries on opposite sides with PG cable glands. S.S. hardware. Fitting for 15W. 240V. LED with Suitable Electronic LED Driver Fitting in line of IP65 protection.
- 1115/BR Same as per Above ... But with Cast Brass body
- 1106/AL Surface / Recess type Die Cast Aluminium body with Die Cast Aluminium frame with Opal Polycarbonate shade. Decorative type LED Fitting with 2 cable entries with 2 PG cable glands opposite side. S.S. hardware. Fitting for 6W. 24V. LED with Suitable Electronic Circuit. Fitting in line of IP 55 protection. Fitting usec Mainly in emergency. (Available in 110V / 240V also).
- 1106/BR Same as per Above ... But with Cast Brass body

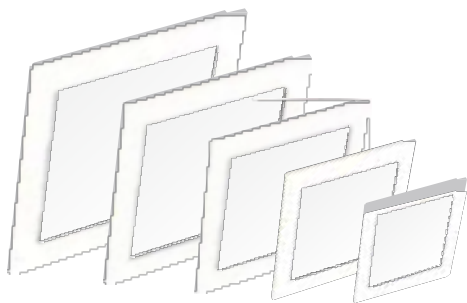


Product Specifications

All fittings can be available 110W / 24V if required

Catalog No.	Watt	Annual Power Consumption	Min. Lumens
1115 / AL	15 W	45 KW	1500 lm
1115 / BR	15 W	45 KW	1500 lm
1106 / AL	06 W	18 KW	600 lm
1106 / BR	06 W	18 KW	600 lm

Marine Led Accommodation / Decorative Light Fitting



- 2001 6W 240V. Decorative LED Panel Light fitting. Die cast Aluminium body with polycarbonate milky shade. 6W. Electronic LED driver. Recess type. Available in Round / Square shape as per the requirements. (Surface type is also available as per the requirements)
- 2002 Same as per above but suitable for 9W.
- 2003 Same as per above but suitable for 12W.
- 2004 Same as per above but suitable for 15W.
- 2005 Same as per above but suitable for 22W.



Product Specifications

All fittings can be available 110W / 24V if required

Catalog No.	Watt	Annual Power Consumption	Min. Lumens
2001	6 W	18 KW	600 lm
2002	9 W	27 KW	900 lm
2003	12 W	36 KW	1200 lm
2004	15 W	45 KW	1500 lm
2005	22 W	65 KW	2100 lm

- 3001 Recess type Decorative LED Panel Light fitting. 24W. 240V. CRCA body with Aluminium Base plate with opal polycarbonate shade. Fitting with 2 nos. 12W. Heavy duty Electronic LED driver with PFimprovement. Square shape approx.
- 3002 Recess type Decorative LED Panel Light fitting. 30W. 240V. CRCA body with Aluminium Base plate with opal polycarbonate shade. Fitting with 2 nos. 12W. Heavy duty Electronic LED driver with PFimprovement. Rectangular shape approx.
- 3003 Same as per above... but Size 2'x2' approx. and suitable for 50W.
- 3004 Recess type Decorative LED Light fitting. 18W. 240V. but with 2 nos. 9W. LED retrofit tubes.
- 3005 Recess type Decorative LED Light fitting. 36W. 240V. CRCA body with Clear polycarbonate shade. Fitting with 2 nos. 18W. LED Tubes.



Product Specifications

All fittings can be available 110W / 24V if required

Catalog No.	Watt	Annual Power Consumption	Min. Lumens
3001	24 W	72 KW	2400 lm
3002	24 W	72 KW	2400 lm
3003	50 W	150 KW	5000 lm
3004	18 W	52 KW	1760 lm
3005	36 W	104 KW	3500 lm

Marine Led Vibration Proof Light Fitting



- 9212/F Vibration resistance and drip proof Engine room light fitting suitable for LED 24W. 240V. 50 hz The fitting made from Fiber body & provided with one piece hinged Polycarbonate milky cover is firmly secured to the housing with stainless steel toggles and fitted with rubber gasket to make totally insect free. The fitting with 24W. LED PCB with aluminium sheet for proper heat dissipation. The fitting provided with 2 nos. 12W LED Heavy Duty Electronic Driver with power factor imp., 2 nos. cable entries PG. cable glands etc. Duly wired up to a suitable connector with provision for earthing 2 nos. MS brackets for vibration mounting.
- 9212/AL ... do ... but fitting made from Aluminium sheet body duly powder coated.
- 9212/MS ... do ... but fitting made from CRCA body duly powder coated.
- 9209/F Same as per 9212 but fitting with 2 nos. 9W. LED retrofit 2' tubes.
- 9218/F Same as per 9209 but fitting with 2 nos. 18W. LED retrofit 4' tubes.

Product Specifications

All fittings can be available 110W / 24V if required

Catalog No.	Watt	Annual Power Consumption	Min. Lumens
9212 / F	24 W	72 KW	2400 lm
9212 / AL	24 W	72 KW	2400 lm
9212 / MS	24 W	72 KW	2400 lm
9209 / F / AL / MS	18 W	52 KW	1760 lm
9218 / F / AL / MS	36 W	104 KW	3500 lm

Marine Led Corner Light Fitting

- 7218 Cronic well decorative fitting suitable for LED 18W 240V, 50hz, made from CRCA MS sheet, duly powder coated with opal/Clear polycarbonate diffuser. Fitting provided with 2 nos cable entries, Fitting With 2 nos. 9W. LED tubes.

Product Specifications

All fittings can be available 110W / 24V if required

Catalog No.	Watt	Annual Power Consumption	Min. Lumens
7218	18 W	58 KW	1760 lm



Marine Led Mirror Light Fitting



- 6109 Mirror light fitting suitable for 9W 2' LED retrofit tubes. CRCA body finished, duly powder coated wired up with 1 no. 2 pin socket and switch. Clear / Opal Polycarbonate shade.

Product Specifications

All fittings can be available 110W / 24V if required

Catalog No.	Watt	Annual Power Consumption	Min. Lumens
6109	9 W	27 KW	900 lm

Marine Watertight Led Hand Lamp

- 1109/AL Die cast Aluminium body with die cast protective wire guard with U shape polycarbonate milky shade with rubber gasket, Rubber handle. S.S. hardware. Hand lamp for 12W. 240V. LED with Suitable Electronic LED Driver in the line of IP 65 protection.



Product Specifications		All fittings can be available 110W / 24V if required	
Catalog No.	Watt	Annual Power Consumption	Min. Lumens
1109 / AL	12 W	36 KW	1200 lm

Marine Led Bunk / Berth Light Fitting



- 5106 Aluminium body decorative type. 6W. 240V. LED light fitting with on / off piano switch. Adjustable top lid to control flow of light duly powder coated with opal shade finish. 6W LED PCB with suitable LED driver.
- 5107 CRCA duly powder coated body rectangular type with S.S. cover 6W. 240V. LED light fitting with pin socket and on / off switch. fitting with suitable LED driver.



Product Specifications		All fittings can be available 110W / 24V if required	
Catalog No.	Watt	Annual Power Consumption	Min. Lumens
5106	6 W	18 KW	600 lm
5107	6 W	18 KW	600 lm

Watertight Led Aviation Light Fitting

- 1015/AL Weather proof and water tight die cast Aluminium body LED Aviation light fitting with red polycarbonate shade, 15W. 240V. LED PCB with suitable heavy duty electronic driver. Duly powder coated finish.
- 1015/BR Same as above but in cast brass body.



Product Specifications		All fittings can be available 110W / 24V if required	
Catalog No.	Watt	Annual Power Consumption	Min. Lumens
1015 / AL	15 W	45 KW	1500 lm
1015 / BR	15 W	45 KW	1500 lm

High Bay Led Light Fitting



- 8001 Die Cast Aluminium body with polycarbonate / Clear Glass shade LED High Bay Fitting. Fitting with Aluminium Fabricated Reflector canopy with MS. bracket for fixing the fitting. All fitting with suitable Heavy duty Electronic LED Driver. Suitable for 85W. 240V.
- 8002 ... do ... Suitable for 150W. 240V.

Product Specifications		All fittings can be available 110W / 24V if required	
Catalog No.	Watt	Annual Power Consumption	Min. Lumen s
8001	85 W	255 KW	8360 lm
8002	150 W	470 KW	14730 lm

Marine Watertight Led Flood Light Fitting



- 4001 Die Cast Aluminium body LED Flood light fitting with clear toughened front glass with Die Cast Aluminium cover ring with rubber gasket. Fitting with Aluminium polished reflector, Fitting with MS bracket for Vertical movement and fixing the fitting. Suitable for 30W. 240V. LED with suitable Electronic Driver. Fitting in the line of IP 65 protection.
- 4002 Same as per above... But suitable for 45W. 240V.
- 4003 Same as per above... But suitable for 60W. 240V.
- 4004 Same as per above... But suitable for 80W. 240V.
- 4005 Same as per above... But suitable for 100W. 240V.
- 4006 Same as per above... But suitable for 150W. 240V.
- 4010 Same as per above... But suitable for 200W. 240V.
- 4011 Same as per above... But suitable for 250W. 240V.

Product Specifications

All fittings can be available 110W / 24V if required

Catalog No.	Watt	Annual Power Consumption	Min. Lumens
4001	30 W	90 KW	2700 lm
4002	45 W	135 KW	4430 lm
4003	60 W	180 KW	5920 lm
4004	80 W	240 KW	7930 lm
4005	100 W	305 KW	9780 lm
4006	150 W	460 KW	14730 lm
4010	200 W	580 KW	17600 lm
4011	250 W	750 KW	23050 lm

Led Retro Fitting & Tubes

- 7001 18W. 240V. LED Retro fit Tube light. 4' with both sides 2 pin and easy to replace conventional 4' tubes
- 7003 18W. 240V. LED 4' Tube light fitting. Aluminium body with opal polycarbonate shade
- 7006 10W. 240V. LED Retro Fit Tube light. 2' with both sides 2 pins and easy to replace conventional 2 'tubes
- 7007 10W. 240V. LED 2' Tube light fitting. Aluminium body with opal polycarbonate shade
- 7008 18W. 240V. LED Retro fit Tube, 4 pin . Replacement of 4 pin conventional PL tubes



Product Specifications

All fittings can be available 110W / 24V if required

Catalog No.	Watt	Annual Power Consumption	Min. Lumens
7001	18 W	52 KW	1760 lm
7003	18 W	52 KW	1760 lm
7006	10 W	31 KW	980 lm
7007	10 W	31 KW	980 lm
7008	18 W	52 KW	1760 lm

Marine Watertight Led Street Fittings

- 5001 15W. 240V. Die cast aluminium body LED Street light fitting with Clear Toughened glass. Aluminium body fixing clips for holding front glass. All Street light in the line of IP 65 protection and suitable for outdoor use. All fitting with suitable Heavy duty electronic LED driver.
- 5002 same as above but suitable for 24W.
- 5003 same as above but suitable for 36W.
- 5004 same as above but suitable for 50W.
- 5005 same as above but suitable for 72W.
- 5006 same as above but suitable for 90W.
- 5007 same as above but suitable for 120W.
- 50010 same as above but suitable for 135W.



Product Specifications

All fittings can be available 110W / 24V if required

Catalog No.	Watt	Annual Power Consumption	Min. Lumens
5001	15 W	45 KW	1500 lm
5002	24 W	72 KW	2360 lm
5003	36 W	109 KW	3600 lm
5004	48 W	142 KW	4800 lm
5005	72 W	216 KW	7140 lm
5006	90 W	275 KW	9100 lm
5007	120 W	368 KW	12500 lm
5007	135 W	375 KW	13500 lm

Our Other Range Of Products

- Industrial type Semi interlock & Fully interlock Receptacles with switches and plugs from 10amps. single phase to 800amps. 3phases
- Single-Trefoil Clamps / Cleats in Aluminum and Nylon body
- Industrial / Commercial / Residential LED light fittings
- Aluminium / M.S. body / Thermoplastic Weather Proof and Water Tight Junction Boxes and Pole Boxes as per specifications and drawings
- Weather proof Push button stations as per the specification and drawings of the clients
- Lighting Distribution Boxes /Control panels as per the specification and drawings of the clients
- Emergency Light Fittings
- FRP Trench covers

Mfg. by -



Ajmera Electrotech LLP
Right Name For Right Use

Ajmera House, Plot No. : A -61, TTC Indl.
Area Khairane MIDC, Navi Mumbai 400705.
(India) Tel. - +91 - 22 - 2762 0296 / 97 / 99
Email - ajmera@ajmera.net / sales@ajmera.net
Website - www.ajmera.net